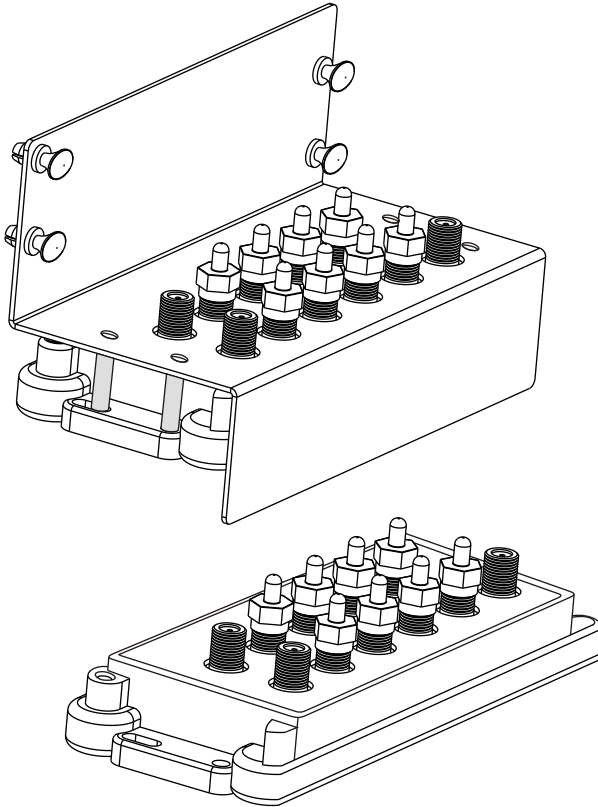


INSTRUCTIONS



C-0333

CVT-2/8WB

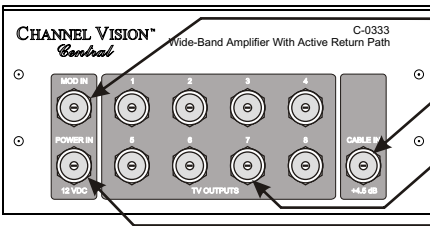
**2x8 Amplifier for Standard & Wide-Band
CATV Systems**

The **CVT-2/8WB** and **C-0333** are 8-output amplified splitters with a built-in combiner for modulated signals. They allow IR signals to pass through the modulator input to the TV outputs, making it a perfect match for the E2200IR, E3200IR or E4200IR. The CVT-2/8WB is designed to mount directly on any flat surface, while the C-0333 can snap directly into a structured wiring enclosure.

Features:

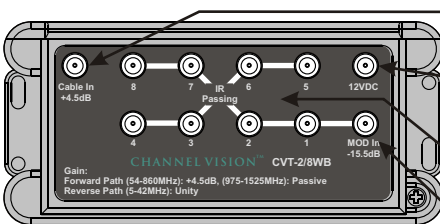
- 8 Amplified outputs: 4.5dB Gain
- Amplified return path from 5-42MHz
- Compatible with Advanced Wide Bandwidth Digital CATV systems
- Supports 1 modulator input
- Allows IR pass through on the modulator input port
- Easy installation

C-0333



- MOD IN**
Connect modulator here
- CABLE IN...** Connect the antenna or cable service feed here
- TV OUTPUTS**
Connect TVs here
- POWER IN**
Connect power supply here

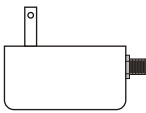
CVT-2/8WB



- CABLE IN...** Connect the antenna or cable service feed here
- POWER IN**
Connect power supply here
- TV OUTPUTS**
Connect TVs here
- MOD IN**
Connect modulator here

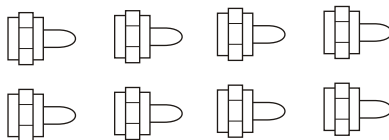
Accessories Included:

Power Supply



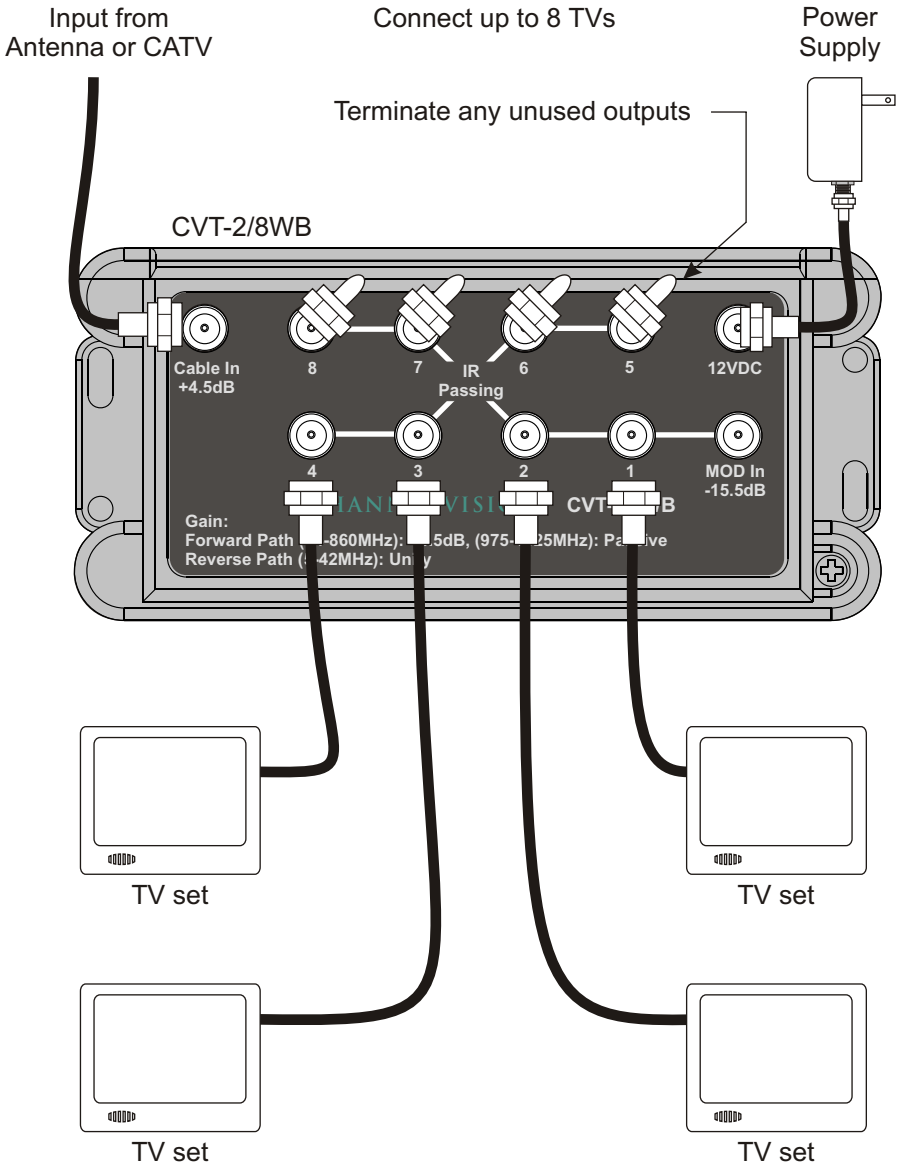
12VDC, 500mA

75 ohm Terminators



Basic Amplified Splitter Application

Connect the CVT-2/8WB as shown and locate it at the main distribution point in the house. The CVT-2/8WB will supply the amplified TV signal to 8 TV locations.

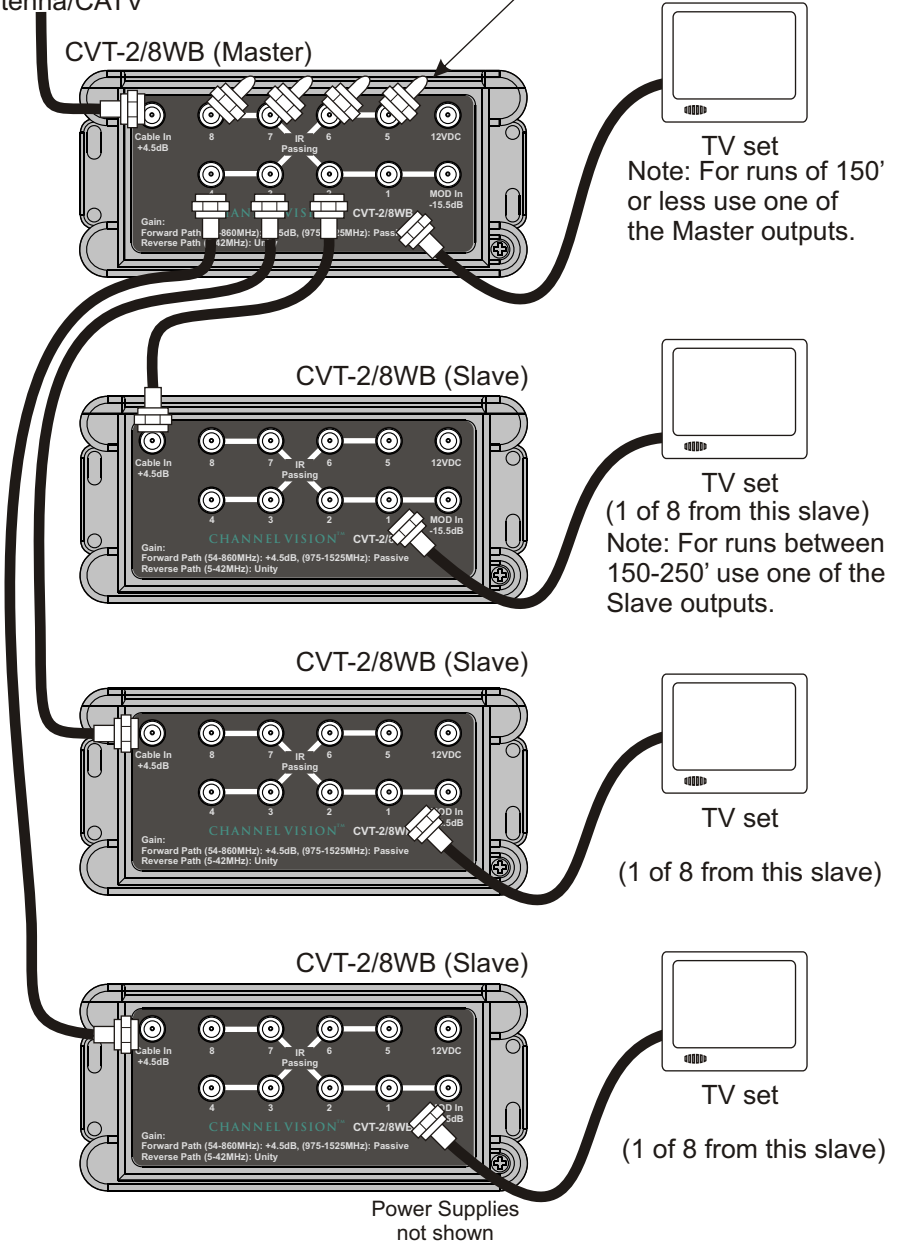


Large System Amplified Splitter Application

The CVT-2/8WB can be cascaded for situations that require more than 8 outputs. Each of the 8 outputs of the CVT-2/8WB can feed the input of an additional CVT-2/8WB creating a system with 64 TV outputs.

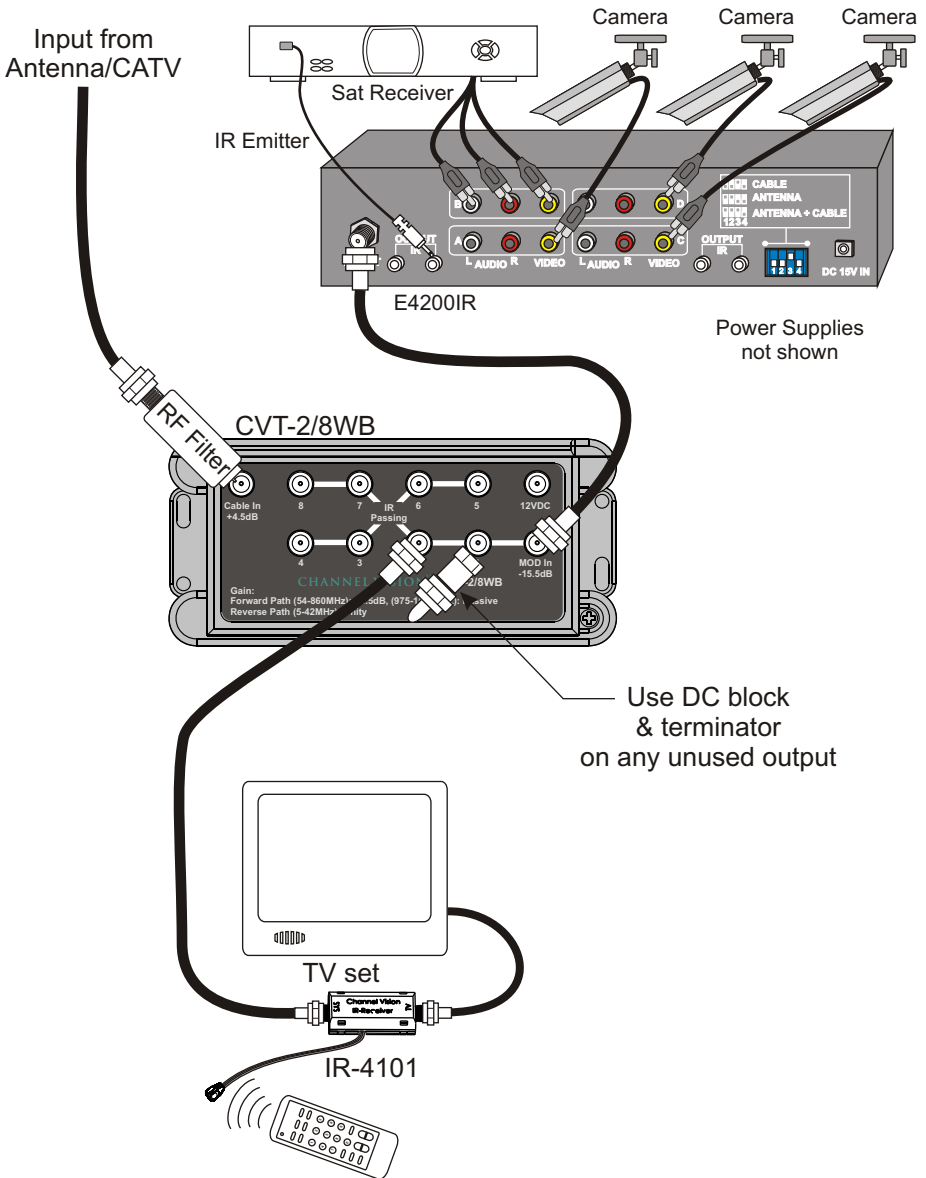
Use a total of 9 CVT-2/8WBs to achieve 64 TV outputs.

Input from Antenna/CATV Terminate any unused outputs



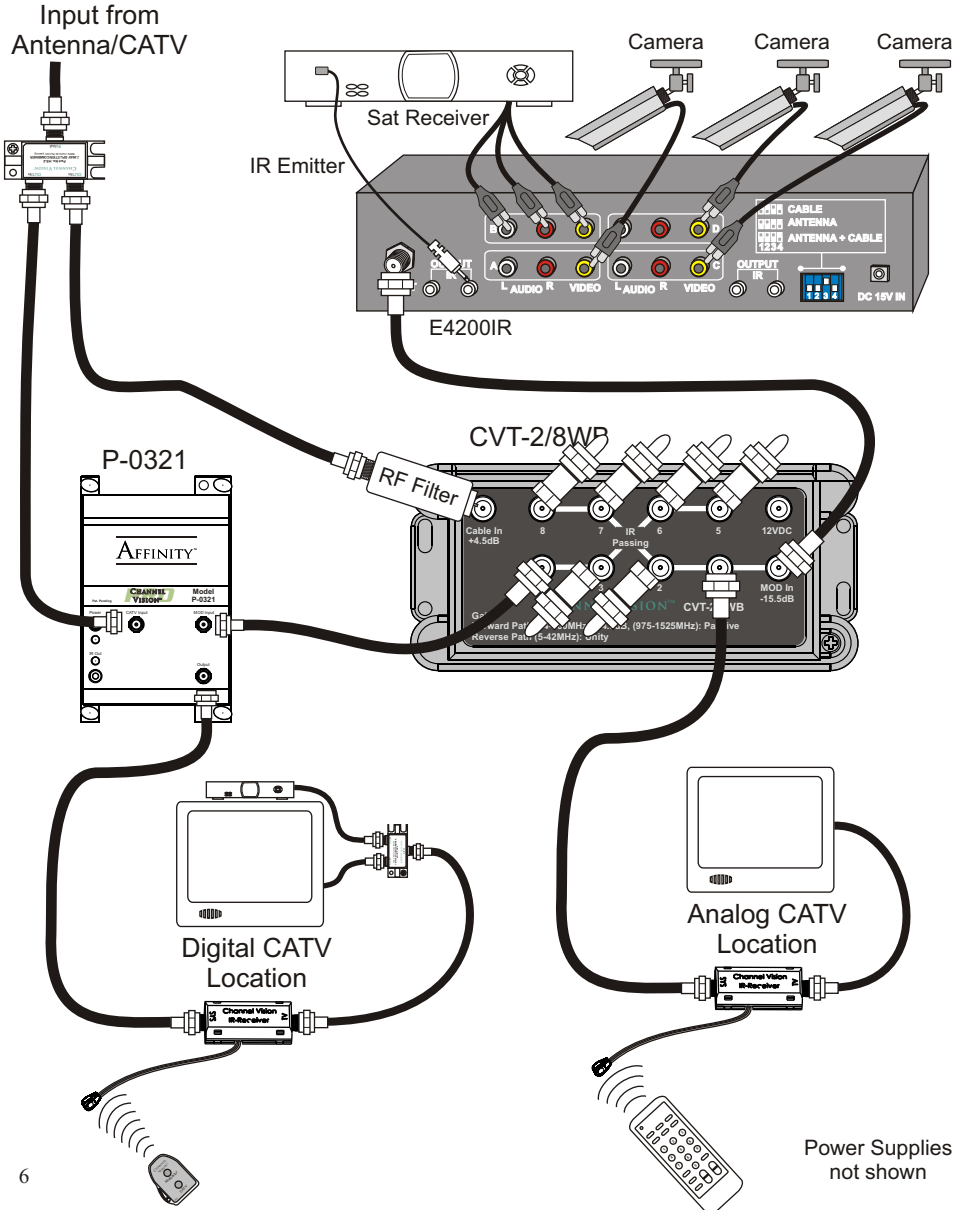
Cascaded Application with IR Control

The IR engine built into the E2200IR, E3200IR, and E4200IR can support up to 8 TV locations with IR receivers. Note: any TV location that does not have IR receiver needs to be **DC blocked** using model 3109.



Using the CVT-2/8WB with the Affinity (P-0321)

The CVT-2/8WB can be integrated with the P-0321 to send modulated signals through a system that has some TVs with digital cable boxes and some TVs without digital cable boxes. An RF filter can be used to remove the digital content from the TVs which do not have digital boxes. This allows modulated channels to be inserted without interference problems. The P-0321 preserves the digital content for the locations that do have digital boxes. Additional details regarding the operation of the Affinity model P-0321 can be found in its installation manual.



Specifications: (typical @25° C)

ITEM	MIN.	TYP.	MAX.	
MODULATOR PATH				
Operation Time	Full Time Bypass			
Insertion Loss	<20dB (15dB typ.)			
Return Loss (I/O)	>14dB			
IR PASS	Yes			
CATV FORWARD PATH				
Frequency Range	54-860 / 975-1525MHz			
Gain	54-800MHz	5.0dB	6.0dB	7.0dB
	800-860MHz	4.0dB	5.0dB	6.0dB
	975-1525MHz	-14dB	-17dB	-20dB
Flatness	+1.0dB			
Return Loss (I/O)	>14dB			
Isolation	>18dB			
Noise Figure@70 degrees F	7.5dB			
Group Delay (54 to 66MHz)	60ns			
Group Delay (66 to 88MHz)	22ns			
Group Delay (88 to 1000MHz)	12ns			
Composite Second Order Distortions	64dBC			
Composite Triple Beat Distortions	74dBC			
Cross Modulation Distortions	60dBC			
Second Hum Modulation	60dBC			
Rated Output Level @160 channels, 6MHz each	+23.0 dBmV			
Power Consumption	180mA			
CATV RETURN PATH				
Frequency Range	5-42MHz			
	5-40MHz	-1.0dB	0dB	1.0dB
	40-42MHz	-1.5dB	-1.0dB	0dB
Flatness	+1.0dB			
Return Loss (I/O)	>14dB			
Isolation	>20dB			
Noise Figure@70 degrees F	20dB			
Group Delay (5 to 10MHz / 36MHz to 42MHz)	55ns			
Group Delay (10 to 36MHz)	36ns			
Composite Second Order Distortions	53dBC			
Composite Triple Beat Distortions	56dBC			
Cross Modulation Distortions	56dBC			
Second Hum Modulation	58dBC			
Rated Output Level @2 channels, 6MHz each	+43.0 dBmV			
Power Consumption	65mA			
GENERAL SPEC				
RFI Shielding	>110dB			
Nominal Impedance	"F" Female	75 ohm		
Supply Voltage (DC)	12-15VDC			

Specifications subject to change without notice.



1 Year Limited Warranty

Channel Vision Technology will repair or replace any defect in material or workmanship which occurs during normal use of this product with new or rebuilt parts, free of charge in the USA, for one year from the date of original purchase. This is a no hassle warranty with no mail in warranty card needed. This warranty does not cover damages in shipment, failures caused by other products not supplied by Channel Vision Technology, or failures due to accident, misuse, abuse, or alteration of the equipment. This warranty is extended only to the original purchaser, and a purchase receipt, invoice, or other proof of original purchase date will be required before warranty repairs are provided.

Mail in service can be obtained during the warranty period by calling (800) 840-0288 toll free. A Return Authorization number must be obtained in advance and can be marked on the outside of the shipping carton.

This warranty gives you specific legal rights and you may have other rights (which vary from state to state). If a problem with this product develops during or after the warranty period, please contact Channel Vision Technology, your dealer or any factory-authorized service center.

Channel Vision products are not intended for use in medical, lifesaving, life sustaining or critical environment applications. Channel Vision customers using or selling Channel Vision products for use in such applications do so at their own risk and agree to fully indemnify Channel Vision for any damages resulting from such improper use or sale.



234 Fischer Avenue, Costa Mesa, California 92626 USA
(714)424-6500 • (800)840-0288 • (714)424-6510 fax
email: techsupport@channelvision.com