



IP Setup Document

Step 1: Get the answers to the following questions from the customer. These answers are required to proceed to Step 2, with no exceptions.

A.) Are you the homeowner or the installer?
(If they say both we do not provide free support, they must be an actual installer/dealer installing this for a customer)

B.) Router Brand:
Router Part Number:
Router Username:
Router Password:

C.) Modem Brand:
Modem Part Number:
Modem Username:
Modem Password:

D.) WAN IP: (Have customer go to www.ipchicken.com for this number)

E.) DVR Username (if default, it is admin)
DVR Password (if default, it is 123456)

F.) Ask the customer if they have a Static or Dynamic IP address

Step 2: Verify the customer has the right equipment to set up the IP Camera

A.) Verify the customer has a CAT5 cable plugged into the IP Camera from the router or switch

| | | |
|--|-------|---------------|
| CHANNEL VISION Costa Mesa CA 92626 1-800-840-0288 www.channelvision.com | | |
| Title IP Setup Document | | |
| Scale na | Sheet | Date 08/11 |



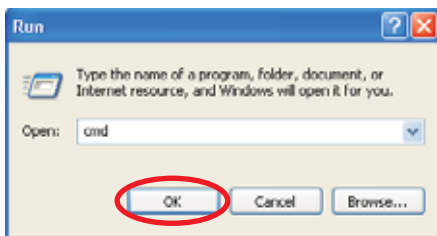
IP Setup Document

Step 2: Describe the following steps to the customer:

A.) Click the 'Run' icon on your computer.



B.) Type in 'cmd' and press enter on your keyboard, or press ok.

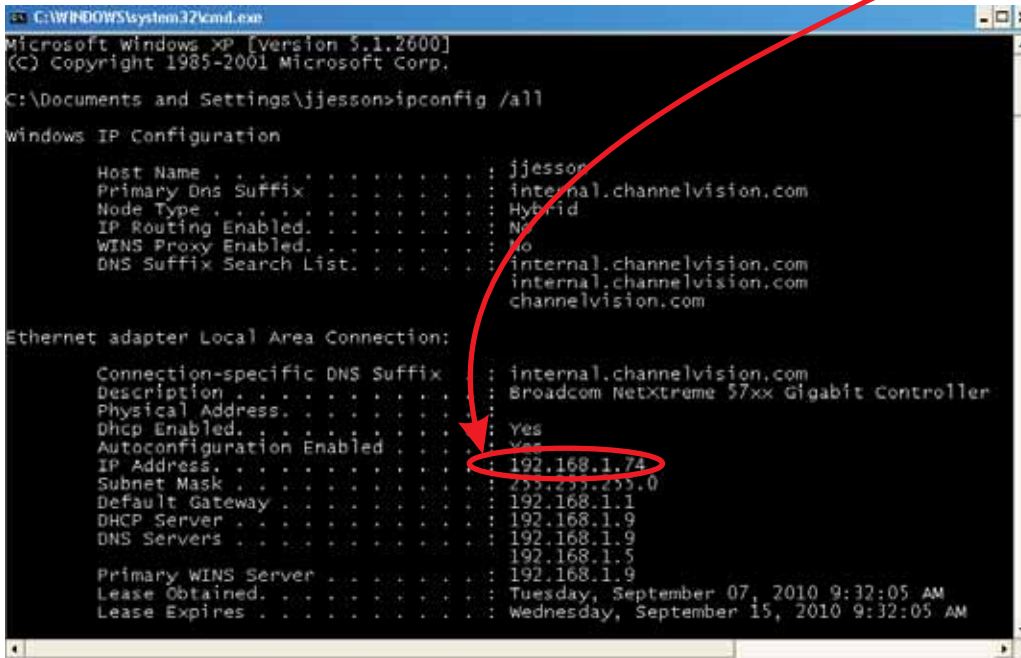


C.) Type in 'ipconfig /all' into the Dos prompt that appears. Press enter.

D.) Write down your computer's IP address.

For example, this computer's IP address is 192.168.1.74.

This is for reference only. Do not put this IP address into the IP Camera.



| | | |
|---|-------|---------------|
| CHANNEL VISION Costa Mesa CA 92626 1-800-840-0288 www.channelvision.com | | |
| Title IP Setup Document | | |
| Scale na | Sheet | Date 08/11 |



IP Setup Document

D.) Copy/write down the following information from the Dos prompt:

- 1.) Default Gateway (Example 192.168.1.1)
- 2.) DNS Server (if 2 servers, use the first one, for example 192.168.1.9)
- 3.) Subnet Mask (Example 255.255.255.0)

```
C:\WINDOWS\system32\cmd.exe
Microsoft Windows XP [Version 5.1.2600]
(C) Copyright 1985-2001 Microsoft Corp.

C:\Documents and Settings\jjesson>ipconfig /all

Windows IP Configuration

Host Name . . . . . : jjesson
Primary Dns Suffix . . . . . : internal.channelvision.com
Node Type . . . . . : Hybrid
IP Routing Enabled. . . . . : No
WINS Proxy Enabled. . . . . : No
DNS Suffix Search List. . . . . : internal.channelvision.com
                                internal.channelvision.com
                                channelvision.com

Ethernet adapter Local Area Connection:

Connection-specific DNS Suffix . : internal.channelvision.com
Description . . . . . : Broadcom NetXtreme 57xx Gigabit Controller
Physical Address. . . . . :
Dhcp Enabled . . . . . : Yes
Autoconfiguration Enabled . . . . . : Yes
IP Address. . . . . : 192.168.1.74
Subnet Mask . . . . . : 255.255.255.0
Default Gateway . . . . . : 192.168.1.1
DHCP Server . . . . . : 192.168.1.9
DNS Servers . . . . . : 192.168.1.9
                        192.168.1.5
Primary WINS Server . . . . . : 192.168.1.9
Lease Obtained. . . . . : Tuesday, September 07, 2010 9:32:05 AM
Lease Expires . . . . . : Wednesday, September 15, 2010 9:32:05 AM
```

| | | |
|---|-------|---------------|
| CHANNEL VISION Costa Mesa CA 92626 1-800-840-0288 www.channelvision.com | | |
| Title IP Setup Document | | |
| Scale na | Sheet | Date 08/11 |



IP Setup Document

Step 3:

- 1.) Connect the IP camera to the switch/router.
- 2.) Power on the IP camera.
- 3.) Open "IP Installer" (Comes on the disk that came with the camera)
- 4.) Press "Search"
- 5.) Click on the "Server name" that is found in IP Installer.

IP Installer V2.2

Device lists:

| Server Name | IP Address |
|------------------|-----------------|
| DVR-16 | 192.168.001.196 |
| DVR-04H | 192.168.001.220 |
| DVR-08 | 192.168.001.246 |
| 6522 | 192.168.001.208 |
| 6521 | 192.168.001.205 |
| W-1001 | 192.168.001.207 |
| DVR-8 (With HDD) | 192.168.001.231 |

Static DHCP

Name: 6522

IP: 192 168 1 208

Netmask: 255 255 255 0

Gateway: 192 168 1 1

DNS 1: 192 168 1 9

DNS 2: 192 168 1 5

Port1: 8006

MAC: 00:0F:0D:21:7B:35

Search Device Submit

To Change Device Name, IP address, and Gateway:

1. Select the device on the left side.
2. Change network parameter on the right side.
3. Press Submit button.
4. Press [Search Device] to re-search again.
5. Double click the device to open it.

Exit

CHANNEL VISION
Costa Mesa CA 92626
1-800-840-0288
www.channelvision.com

Title
IP Setup Document

Scale na Sheet Date
08/11



IP Setup Document

10.) Make sure “Static” is selected at top.

11.) Assign an IP address to the IP Camera by using the first 3 sets of numbers of your default gateway.

Use exactly the same 3 sets of numbers as your default gateway that you wrote down.

For Example: If the default gateway is 192.168.1.1

Then the IP Camera’s IP Address will start with 192.168.1._

Note: Last set of numbers are called the host number, not entered yet.

For the host number, be sure to assign a different number than your computer’s host number

(2-250) Complete the IP Camera’s IP address by entering a host number (last digits).

Complete the IP Camera’s IP address by entering a host number (last digits).

12.) Enter the information you wrote down from Step 2 on page 3.

A.) Subnet Mask

B.) (Default) Gateway

C.) DNS (Server)

D.) Port (Channel Vision recommends 8000)

13.) After entering the information, click “Submit”

14.) (Example) Open <http://192.168.1.208:8000> in Internet Explorer
[http://\(Your IP Camera’s IP\):\(port you assigned\)](http://(Your IP Camera’s IP):(port you assigned))

| Server Name | IP Address | Name | IP | Netmask | Gateway | DNS 1 | DNS 2 | Port1 | MAC |
|------------------|-----------------|------|---------------|---------------|-------------|-------------|-------------|-------|-------------------|
| DVR-16 | 192.168.001.196 | | | | | | | | |
| DVR-04H | 192.168.001.220 | | | | | | | | |
| DVR-08 | 192.168.001.246 | | | | | | | | |
| 6522 | 192.168.001.208 | 6522 | 192 168 1 208 | 255 255 255 0 | 192 168 1 1 | 192 168 1 9 | 192 168 1 5 | 8006 | 00:0F:0D:21:7B:35 |
| 6521 | 192.168.001.205 | | | | | | | | |
| W-1001 | 192.168.001.207 | | | | | | | | |
| DVR-8 (With HDD) | 192.168.001.231 | | | | | | | | |

To Change Device Name, IP address, and Gateway:
1. Select the device on the left side.
2. Change network parameter on the right side.
3. Press Submit button.
4. Press ISearch DeviceI to re-search again.
5. Double click the device to open it.

CHANNEL VISION
Costa Mesa CA 92626
1-800-840-0288
www.channelvision.com

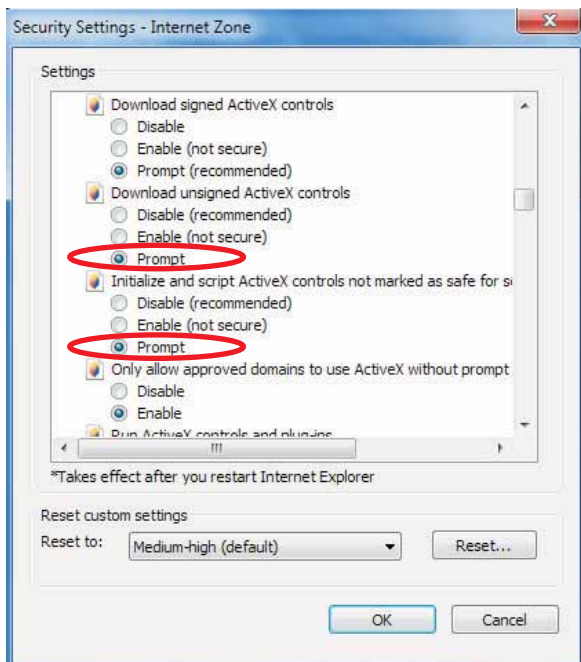
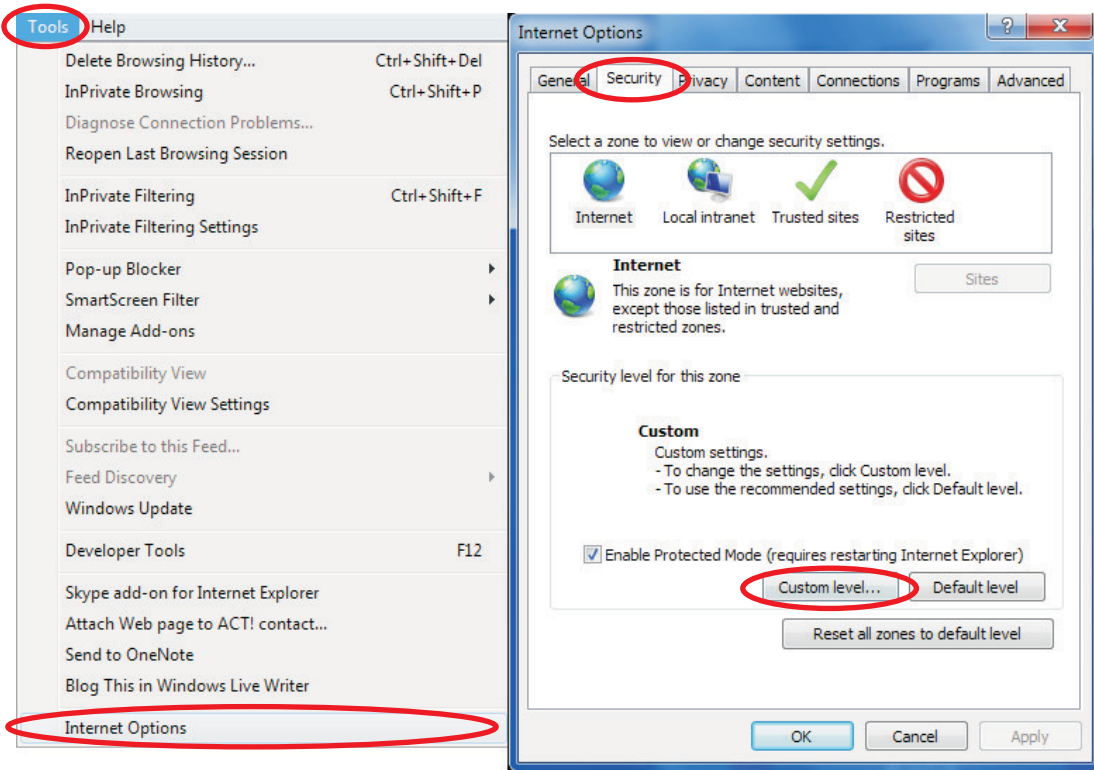
Title
IP Setup Document

Scale na Sheet Date 08/11



IP Setup Document

21.) The first time you connect to the IP Camera through Internet Explorer, it will ask you to install the ActiveX control on your computer. Internet Explorer 6,7,8, or 9 must be used with this ActiveX control. However, IE 6 is very old, and will not always work. If the ActiveX control does not load, please go to “Tools” “Internet Options”, then “Security” then “Custom Level” Every area that mentions ActiveX should be “Prompt” unless it is already set to enable or disable.

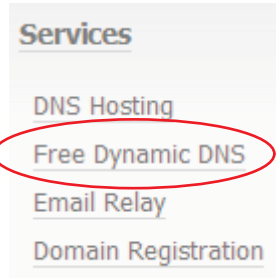




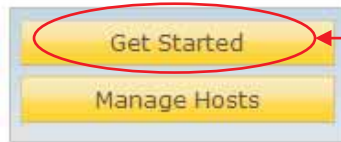
DDNS Setup

Step 4: Go to the following web address: www.dyndns.com.

1.) Scroll down, and click the “Free Dynamic DNS” option.



2.) Click the “Get Started” Icon.



IMPORTANT NOTE: YOU WILL NEED TO CREATE A FREE ACCOUNT WITH DYNDNS.ORG

| | | |
|--|-------|---------------|
| CHANNEL VISION Costa Mesa CA 92626 1-800-840-0288 www.channelvision.com | | |
| Title IP Setup Document | | |
| Scale na | Sheet | Date 08/11 |



DDNS Setup

3.) Under “Hostname” chose a name for the DVR. Make sure to chose the dyndns.org option

4.) “For Service Type” select “Host With IP Address”.

Hostname: customerdvname . dyndns.org

Wildcard Status: Disabled [Want Wildcard support?]

Service Type: Host with IP address [?] WebHop Redirect [?] Offline Hostname [?]

IP Address: [Use auto detected IP address 88.888.32.212.](#)

Mail Routing: Yes, let me configure Email routing. [?]

5.) Click “Use auto detected IP Address”
(Same number can be found at www.ipchicken.com)

6.) Click “Add To Cart”



DDNS Setup

7.) Click Next.

Shopping Cart

Your cart contains **free services only**. You will not be asked for credit card information.

Dynamic DNS Hosts

customerdvname.dyndns.org

-

remove

\$0.00

Please enter coupons in the box below and click "Add Coupon".

Add Coupon

Sub-Total:

\$0.00

Order Total:

\$0.00

Next >>

8.) Click "Activate Services"

Free Services Checkout

Once you have confirmed the contents of your cart your services will be instantly activated.

| Service | Period | Price |
|--|-------------------|---------------|
| Dynamic DNS Hosts | | |
| customerdvname.dyndns.org | - | \$0.00 |
| | Sub-Total: | \$0.00 |

Activate Services >>

9.) Copy "customerdvname.dyndns.org"

Please note: Your DVR web address WILL be different than "customer name".

You must choose your own name for the DVR.

CHANNEL VISION
Costa Mesa CA 92626
1-800-840-0288
www.channelvision.com

Title
IP Setup Document

Scale
na

Sheet

Date
08/11



DDNS Setup

10.) Now, add the DDNS information into the IP Camera. When on the network page of the IP Camera, click or select the “DDNS” button.

11.) Click “Apply”



A screenshot of the 'DDNS' configuration page. The title 'DDNS' is at the top. Below it is the 'DDNS Setting' section, which is circled in red. It contains the following fields: 'Enabled' (selected) and 'Disabled' (unselected) radio buttons; 'Provider:' dropdown menu with 'dyndns.org' selected; 'Hostname:' text box with 'channelvision'; 'Username:' text box with 'cvt123'; 'Password:' text box with masked characters; and 'Schedule Update:' text box with '30' and 'Minutes' label. Below this is a 'State' section with a dropdown menu showing 'Idle'. At the bottom right is an 'Apply' button.

Note:

1. Schedule Update: Depends on the input time of Schedule Update, it will update DDNS's web site automatically. The time range is from 5 to 5000 minutes.
*0: It will not update.
2. dyndns.org & 3322.org: Update once per day is recommended (1440 minutes per day). If updated too frequently, it will be blocked.

| | | |
|---|-------|---------------|
| CHANNEL VISION Costa Mesa CA 92626 1-800-840-0288 www.channelvision.com | | |
| Title IP Setup Document | | |
| Scale na | Sheet | Date 08/11 |

Port Forwarding

Many routers have the ability to port forward your IP Camera allowing access to the IP camera from anywhere in the world. Below are some basic examples of port forwarding.

The **example** below is of a SMC router.

This must be completed to view on any device outside of your home or office network.

Forward your router to forward a port (such as port 5400) to the internal IP address of the IP Camera Using the SMC router interface, click Advanced Setup.

Click NAT and the Virtual Server page should appear as shown below. (Other routers should have a similar interface)

Port Forwarding SMC Router

Enter the address of the DVR

Designate a port (should be the same port you set on the DVR)

Check box to enable forwarding

| ID | IP Address | Port/s | Data Type | Enable |
|----|---------------|--------|-----------|-------------------------------------|
| 1 | 192.168.2.206 | 5400 | TCP | <input checked="" type="checkbox"/> |
| 2 | 192.168.2. | | TCP | <input type="checkbox"/> |
| 3 | 192.168.2. | | TCP | <input type="checkbox"/> |

Choose TCP from the drop down box (Transmission Control Protocol)

Note: the address shown above is just an example.

To activate the changes, scroll to the bottom of the page and click "Apply" and then "Restart".

1. Click RESTART

2. Click APPLY



Saved! The change doesn't take effective until rebooting!



Port Forwarding

Below are several points of reference regarding port forwarding.

1.) [Http://en.wikipedia.org/wiki/Port_forward](http://en.wikipedia.org/wiki/Port_forward)

The wikipedia page explains what port forwarding is, how it is used and what its applications are.

***This website is not affiliated with Channel Vision.**

2.) [Http://screenshots.portforward.com/](http://screenshots.portforward.com/)

This website contains picture by picture walkthroughs on how to port forward most routers on the market.

***This website is not affiliated with Channel Vision.**

Port Forwarding LG Routers

In the example below, there is a IP Camera running on port 8002 on the LAN.

- 1.) Add the IP information, including the desired port into the port forwarding tab of "advanced" in the router
- 2.) Check "Enable Port Forwarding".

Enable Port Forwarding

| | |
|---------------|--------------|
| Description : | IP Camera |
| Local IP : | 192.168.2.64 |
| Protocol : | Both ▾ |
| Local Port : | 8002 |
| Public Port : | 8002 |

- 3.) Click 'Add'.
- 4.) Click "Select".

Current Port Forwarding Table :

| NO. | Description | Local IP | Local Port | Type | Public Port | Select |
|-----|-------------|--------------|------------|------|-------------|--------------------------|
| 1 | IP Camera | 192.168.2.64 | 8002 | BOTH | 8002 | <input type="checkbox"/> |

- 5.) Select "Apply" to enable your new port forwarding rule

CHANNEL VISION
Costa Mesa CA 92626
1-800-840-0288
www.channelvision.com

| | | |
|----------------------------|-------|---------------|
| Title IP Setup Document | | |
| Scale na | Sheet | Date 08/11 |



Common Issues

Over the course of setting up hundreds of DVR's and IP Cameras, we have found some routers to be problem routers.

Some are companies, some are just general things to look out for. Below are a list of things to note.

1.) 2Wire modem/router combinations do not work the normal way with this DVR/IP Camera.

You cannot set up the IP Camera on "LAN" and must select "DHCP" in IP Installer.

Once you do this, there is a good chance that the IP Camera will show up in the **2Wire** router, allowing you to port forward the IP Camera. If you give the IP Camera a LAN address, the **2Wire** router will not detect it, and you cannot port forward it.

2.) Port forwarding does not work in all routers. Sometimes, a router flat out doesn't have the ability to do port forwarding. This is very rare. However, they do exist.

3.) Port forwarding may not work in a router because it is defective. It is always possible, though very rare, that the router the customer has is defective when it comes to port forwarding

4.) Lets say you already port forwarded the router, and IP Camera should be working outside of the network. Inside of the network, the IP Camera works, however, the IP Camera does not work externally.

There are many reasons this could happen, but here are the 2 most common causes of something like that:

A.) The IP Camera network page is not set up properly. For example, maybe they are missing the DNS server, or the subnet mask is wrong. It will still connect internally usually, but not externally.

B.) The customer unknowingly has 2 routers. No matter what you do, you cannot have 2 routers in a network if you wish to view the IP Camera outside of the network. The only exception to this is if one router is completely disabled, being used only as a wireless access point

CHANNEL VISION
Costa Mesa CA 92626
1-800-840-0288
www.channelvision.com

| | | |
|----------------------------|-------|---------------|
| Title IP Setup Document | | |
| Scale na | Sheet | Date 08/11 |