

CHANNEL VISION™
10 Year Limited Warranty

Channel Vision Technology will repair or replace any defect in material or workmanship which occurs during normal use of this product with new or rebuilt parts, free of charge in the USA, for ten years from the date of original purchase. This is a no hassle warranty with no mail in warranty card needed. This warranty does not cover damages in shipment, failures caused by other products not supplied by Channel Vision Technology, or failures due to accident, misuse, abuse, or alteration of the equipment. This warranty is extended only to the original purchaser, and a purchase receipt, invoice, or other proof of original purchase date will be required before warranty repairs are provided.

Mail in service can be obtained during the warranty period by calling (800) 840-0288 toll free. A Return Authorization number must be obtained in advance and can be marked on the outside of the shipping carton.

This warranty gives you specific legal rights and you may have other rights (which vary from state to state). If a problem with this product develops during or after the warranty period, please contact Channel Vision Technology, your dealer or any factory-authorized service center.

CHANNEL VISION™
www.channelvision.com

234 Fischer Avenue, Costa Mesa, California 92626 USA
(714)424-6500 • (800)840-0288 • (714)424-6510 fax
email: techsupport@channelvision.com

500-240 rev A1

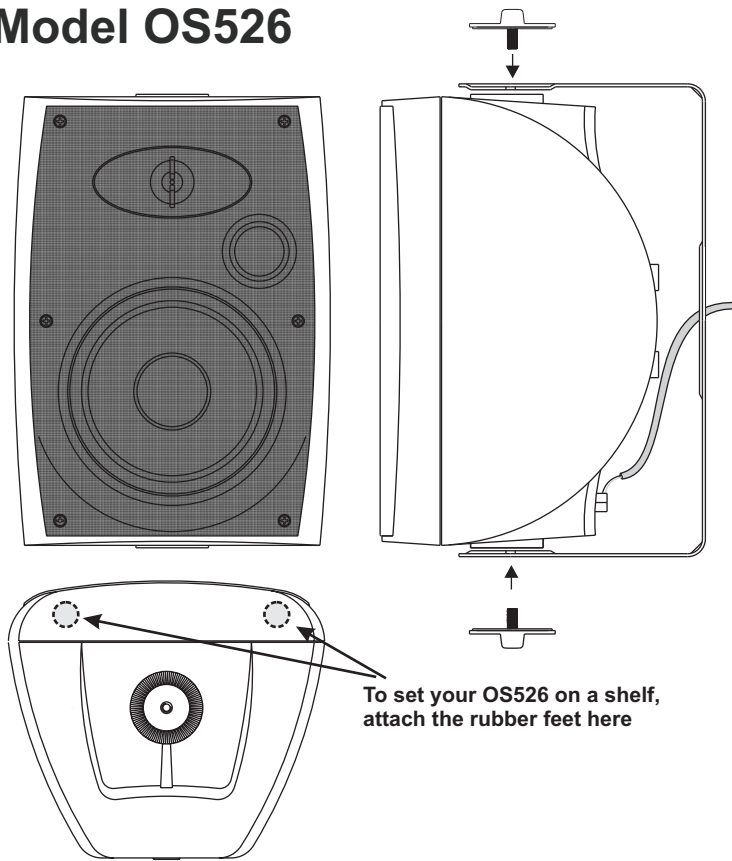
INSTRUCTIONS



OS526 **5.25" Marine/Outdoor Speaker**

CHANNEL VISION™
©2009 CHANNEL VISION TECHNOLOGY

Model OS526



- 1) Weather resistant design
- 2) Aluminum grills, and brackets
- 3) Stainless steel hardware
- 4) UV protected cabinet resists sun fade
- 5) 14 AWG gold plated terminal posts
- 6) 5.25" Long Extrusion Woofer
- 7) 0.5" High Compliance Polymer Tweeter
- 8) 18dB /octave crossover network
- 9) Tweeter protected by poly switch

Specifications:

Frequency range: 60Hz - 20kHz \pm 3dB

Sensitivity: 90dB (1W/1M)

Power Handling: 160 Watts (max)

Drivers:
1- 0.5" High Compliance
Polymer Tweeter
1- 5.25" Long Extrusion
Woofer with 20oz magnet

Impedance: 6 ohms

Finish: ABS plastic

Dimensions: 10.63"H x 7.32" W x 6.30" D

Weight: 5.2 Lbs with bracket

Specifications subject to change without notice.

Installation:

- The OS526 may be mounted vertically or horizontally.
- The OS526's case is weather resistant and made with UV stabilized ABS. But for longest life, we recommend placement in a protected area, such as under an eave.
- We recommend wiring with AWG 16 or larger, stranded wire.
- For proper phasing, both speakers must be wired alike. Connect red wire to red terminal on speakers and to red or plus terminal on amplifier.
- To control the volume of the speakers locally, use an impedance matching volume control, such as the Channel Vision VC-302.