

Specifications: (typical at 25 °C)

Telco inputs: 2 (1-RJ-45 and 1-110)

Outputs: 2 (1-RJ-45 and 1-110)

RJ-45 Pinout: TIA568A

Dimensions: 3.0"W x 6.5" H x 1.25" D

ADSL Filter

Insertion Loss: <0.5dB @1020Hz

Attenuation: 30KHz,200KHz,300KHz>65dB

500KHz,1104KHz>55dB

Specifications subject to change without notice.

CHANNEL VISION Limited Warranty

Channel Vision Technology will repair or replace any defect in material or workmanship which occurs during normal use of this product with new or rebuilt parts, free of charge in the USA, for one year from the date of original purchase. This is a no hassle warranty with no mail in warranty card needed. This warranty does not cover damages in shipment, failures caused by other products not supplied by Channel Vision Technology, or failures due to accident, misuse, abuse, or alteration of the equipment. This warranty is extended only to the original purchaser, and a purchase receipt, invoice, or other proof of original purchase date will be required before warranty repairs are provided.

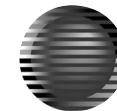
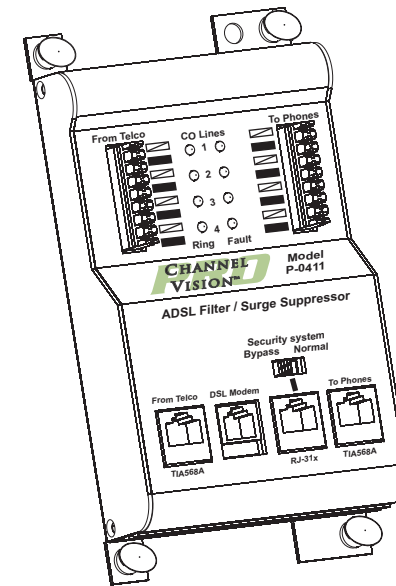
Mail in service can be obtained during the warranty period by calling (800) 840-0288 toll free. A Return Authorization number must be obtained in advance and can be marked on the outside of the shipping carton.

This warranty gives you specific legal rights and you may have other rights (which vary from state to state). If a problem with this product develops during or after the warranty period, please contact Channel Vision Technology, your dealer or any factory-authorized service center.

CHANNEL VISION™

Model P-0411

ADSL Filter / Phone Surge Module



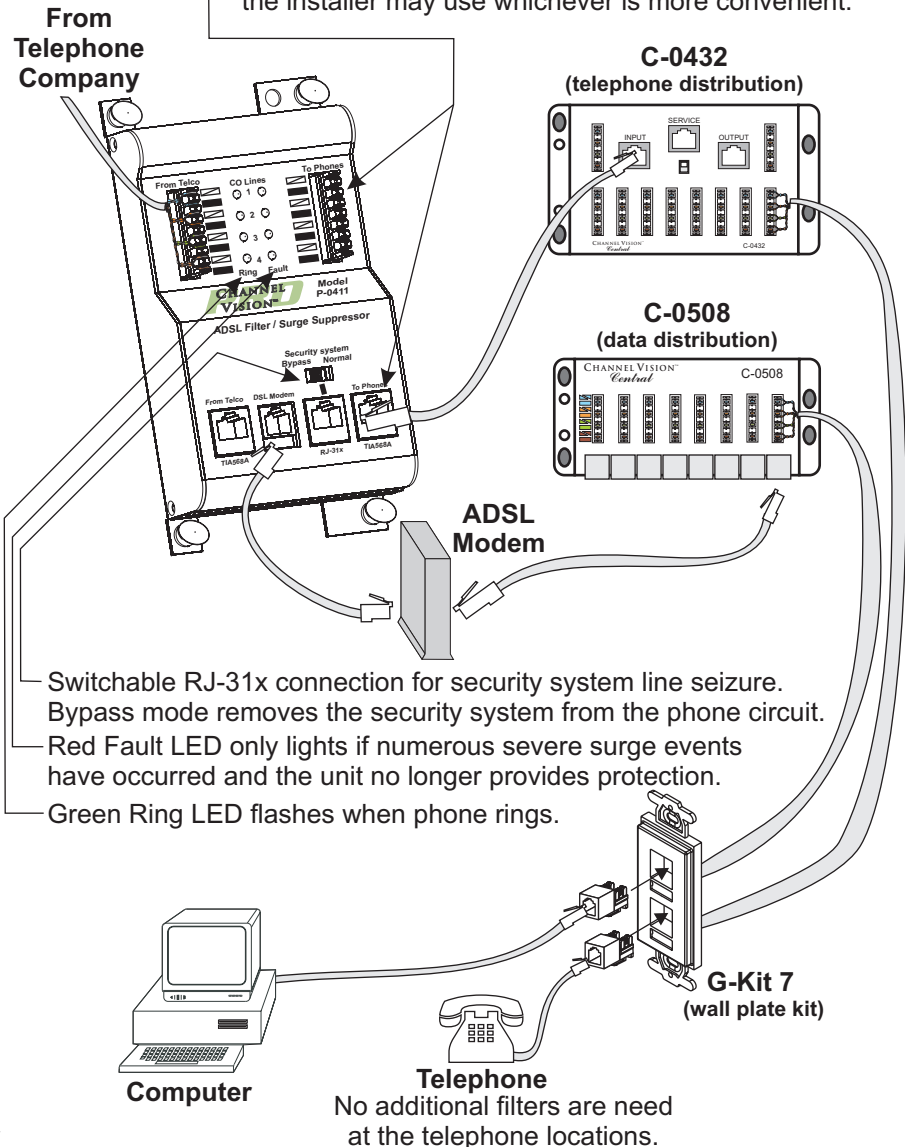
CHANNEL VISION™

234 FISCHER AVENUE • COSTA MESA, CA 92626
(714) 424-6500 • (800) 840-0288 • (714) 424-6510 fax
www.channelvision.com • email: sales@channelvision.com

The **P-0411** provides a discrete connection for your DSL modem and a convenient way to filter the data noise out of all the phones in the house. Additionally, the P-0411 offers some of the best telephone surge technology available.

- Active line and surge LED indicators
- 110 and RJ-45 inputs and outputs
- Self-healing fuse stops surges without destroying itself
- RJ-31x security system connection

RJ-45 and 110 input and output connectors are in parallel: the installer may use whichever is more convenient.

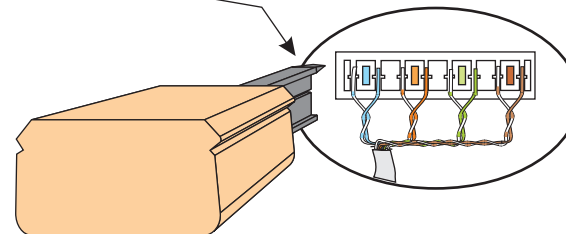


- Switchable RJ-31x connection for security system line seizure. Bypass mode removes the security system from the phone circuit.
- Red Fault LED only lights if numerous severe surge events have occurred and the unit no longer provides protection.
- Green Ring LED flashes when phone rings.

Installation:

Punch down as many as 4 incoming telephone lines on the input 110 punch-down as shown. Use a 110 punch-down tool to seat and trim all wires.

Note position of cutter



Suggested wiring:

- CAT5 wire from distribution to wallplate
- CAT5 interconnects (models C-0408 and C-0409)

Features:

- LED indicators for active line and surge damage notification
- ADSL filter on line 1 and discrete modem output connection
- Protects against phone line transients caused by lighting, power cross, and other conditions.
- Exceeds FCC Part 68 A and Type B lightning immunity requirements.
- Bellcore 1 compliant (GR-1089) (2500V@500amps)
- Easily connects to phone distribution modules using jumper cables: C-0408 or C-0409.
- Snaps easily into Channel Vision Central enclosures and the new PRO-series P-1300.